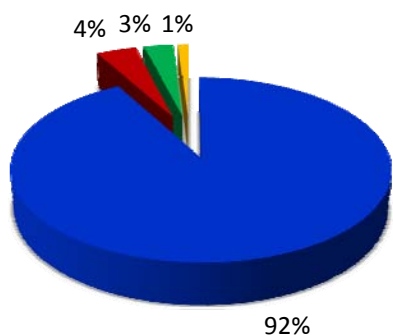
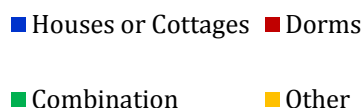


FINDINGS

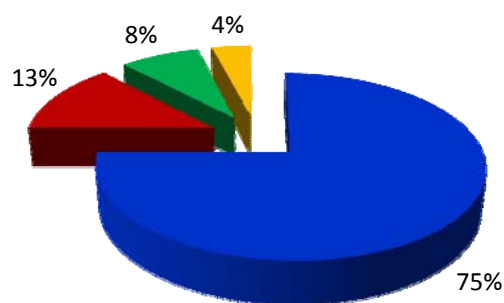
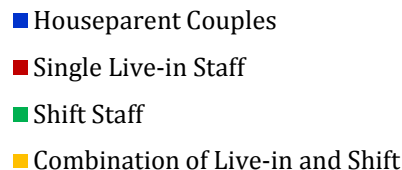
Program Models

Residential education programs overwhelmingly exemplify a dedication to modeling themselves after a family lifestyle. Ninety-two percent accommodate their students in houses or cottages; seventy-five percent utilize full-time, live-in house couples.

Living Style



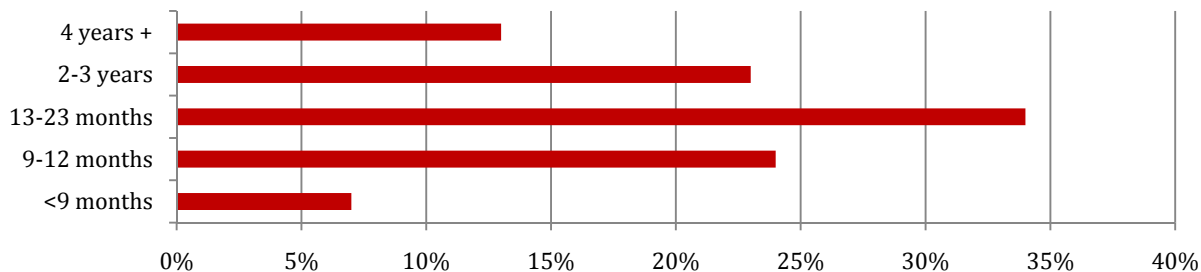
Staffing Pattern



Residential education programs offer far beyond schooling and residence. The vast majority of programs provide counseling, independent living skills training, spiritual development, technology training, sports, arts programs, student leadership and citizenship training, and other services. Most programs also offer college scholarships to their graduates.

Ninety-seven percent of programs actively encourage parental involvement. Regular contact via phone and e-mail, home visits, family events, family counseling, and subsidized transportation are common modes of promoting family ties.

Average Length of Stay



Length of stay varies widely between programs. The most common was a span of 13-23 months. Serving youth in foster care usually lowers the length of stay significantly.



75% utilize full-time, live-in house couples

